

5 REASONS TO

Engage An Assurex Global Partner

1

Independent All Assurex Global Partners are independently owned and therefore highly entrepreneurial in their approach to servicing. Decisions get made. Responsiveness is a core value. In short - we are free to act in your best interest; we make it work for you.



2

Vetted & Invested All Assurex Global Partners undergo an intensive evaluation process to assess their capability levels. The standards are high and uncompromising. Among the thousands of independent commercial insurance brokers worldwide, just over 100 are Partners in Assurex Global. In addition, all make a significant equity investment in Assurex Global, so they are fully committed to one another and making all their clients realize full value. That's why we are called Partners.

3

Servicing Locally, Reaching Globally Due to Assurex Global's worldwide Partnership, collaboration tools, and communications infrastructure, all Assurex Global Partners are capable of servicing your accounts across the globe with equal precision and localized service.

4

One in Many; Many in One When you sign with an Assurex Global Partner, you not only get access to its specialized expertise but also that of all experts within 100 plus Partners worldwide. There is no problem we cannot solve.

5

Connected in All the Right Places Due to its collective bargaining power and 60-year history with carriers and industry influencers, you receive the benefits of cost-efficient pricing and best fit product offerings.



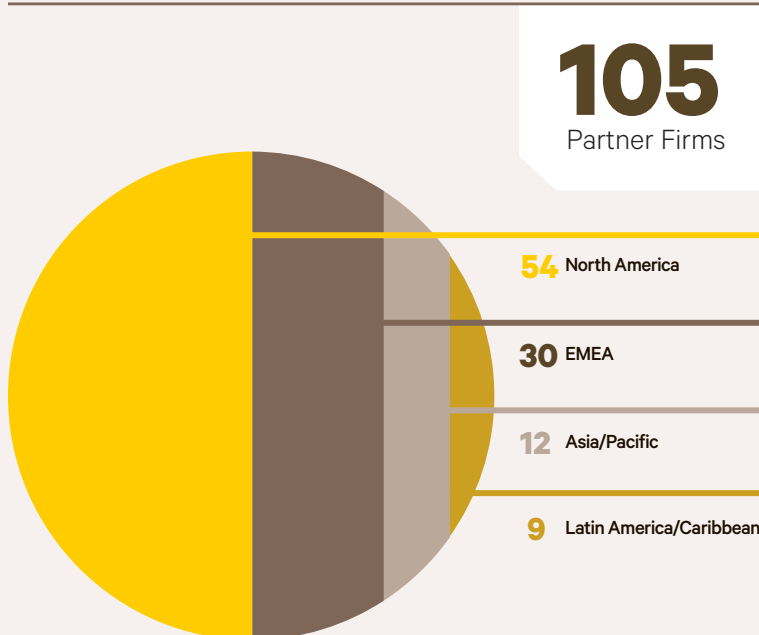
Strength Through Independence.

Who We Are

Assurex Global is an exclusive Partnership of the most prominent independent agents and brokers in the world:

- Founded in 1954 (61 years)
- \$2.7 billion in annual revenue
- \$28 billion in annual premium volume
- 105 Partners with more than 600 Partner offices on six continents (more than 19,000 insurance professionals)
- Partner-driven, Partner-owned
- Headquartered in Columbus, Ohio, USA

A Global Partnership



Our “Whys”

The “why” of the Partnership is a framework which helps Partners:

- Expand client services
- Improve operations
- Compete at the highest level

What We Do

- Facilitation of best practices
 - >30 education, professional development & annual meetings
- Sales support
 - Databases (i.e. Axco)
 - Practice Groups
- International trading platform
- Financial and operational Partner benchmarking
- Technology support
 - Passport (>20,000 users)
 - Community (connect, communicate, collaborate)
 - Assurex Global Private Exchange (>10,000 lives)
 - Data Analytics (*under development*)
- Perpetuation and independent ownership

How We Do It

- Proven and established management team
- Board of Directors are industry leaders
- Business plan driven
- Active engagement via task forces and steering committees

Top 10 Insurance Brokers Worldwide

RANKED BY 2014 BROKERAGE REVENUE source: *Business Insurance*, July 2015

1 Marsh
585 offices / \$12.9B

2 Aon
500 offices / \$12B

3 Willis
400 offices / \$3.8B

4 A.J. Gallagher
550 offices / \$3.5B

5 Assurex Global
634 offices / \$2.7B

6 JLT
114 offices / \$1.7B

7 BB&T Insurance
118 offices / \$1.7B

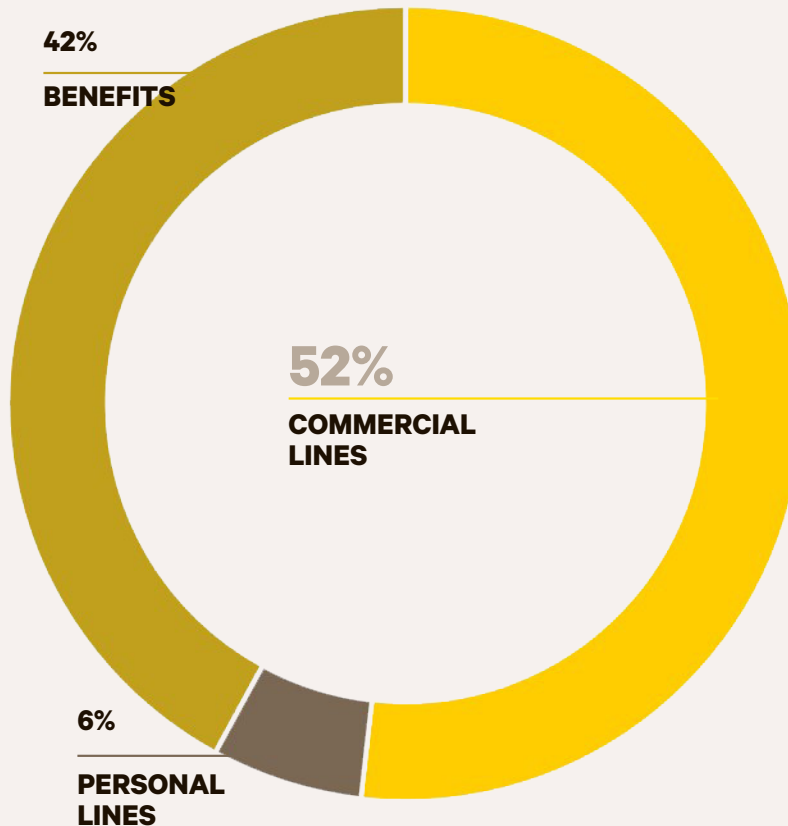
8 Brown & Brown
235 offices / \$1.6B

9 Wells Fargo
56 offices / \$1.3B

10 HUB International
322 offices / \$1.3B

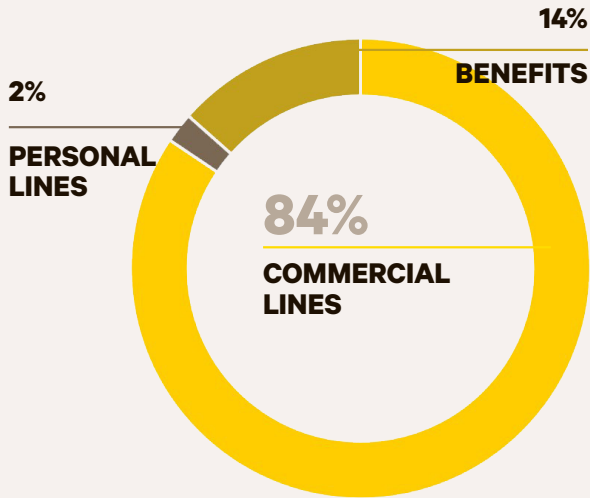
2014 Assurex Global Premium Volume

Total Premium Volume | \$28B

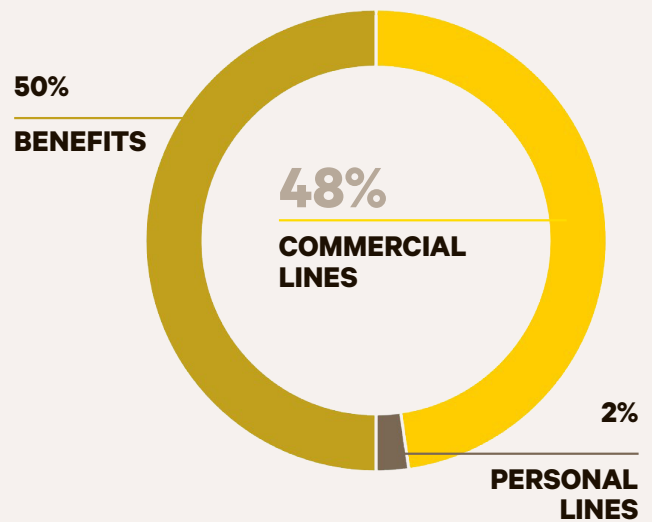


2014 Assurex Global Premium Volume by Region

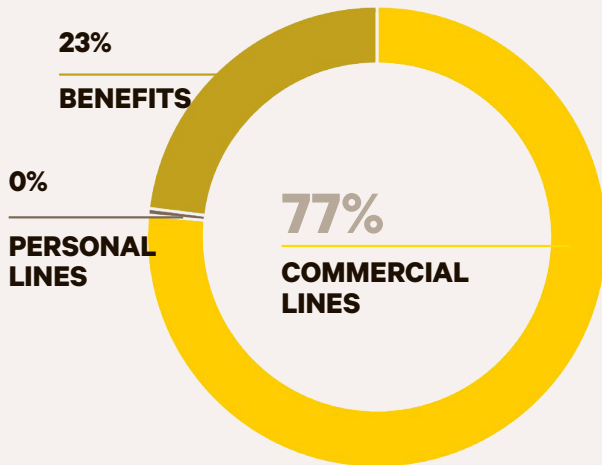
Asia/Pacific | \$586M



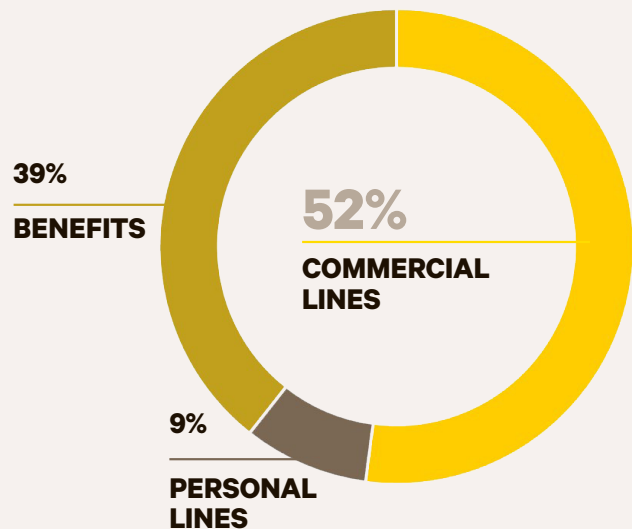
Europe/Middle East/Africa | 9.4B



Latin America/Caribbean | \$559M



North America | \$18B



Assurex Global Partners

ASIA/PACIFIC

Acclaim Insurance Brokers Pte Ltd. / AEGIS Co., Ltd. (correspondent broker) / Asian Alliance Risk Services Taiwan / CM Houlder Insurance Brokers Limited / Cornes & Company Limited / Daewoo INS Korea Corp. / Gotuaco, del Rosario Insurance Brokers, Inc. / GSA Insurance Brokers Pty Limited / J.B. Boda & Company Pvt. Ltd. / MIR Insurance Brokers / State Insurance Brokers Sdn. Bhd. / Trafalgar International Ltd. / Ximco Corporation

LATIN AMERICA/CARIBBEAN

Correcol – Corredores Colombianos de Seguros S.A. / Franco Fernandez & Asociados, S.R.L. / Gabel Corredores de Seguros SAC / Interbrok Group – Adams & Porter Sociedade de Corretagem de Seguros Ltda. / Lilienfeld, Corredores de Seguros Limitada / LorantMMS, Seguros y Fianzas / Makler S.A. / MaKLeR Sociedad de Corretaje de Seguros, C.A. / Padeco Seguros

EUROPE/MIDDLE EAST/AFRICA

ACECA / Allia Insurance Brokers n.v./s.a. / Allrisk Leue & Nill Versicherungsmakler GmbH / Arachas Corporate Brokers Ltd. / Ascoma Group / Associated Insurance Consultants / BH Sigorta ve Reasurans Brokerligi, A.S. / Charles Stanley Financial Solutions / Cicor International, S.L. / Dahlberg Assurance Brokers A/S / Dogan Sigorta ve Reasurans Brokerligi, A.S. / Eurobrokers S.A. / F. Rego Corretores de Seguros, S.A. / GEPAR / GIB Insurance Brokers (Pty) Ltd. / Griffiths & Armour / Henner / IBC Insurance Broking and Consulting SA / João Mata Corretores e Consultores de Seguros, Lda / Leaderim Insurance Brokers (1995) Ltd. / Leue & Nill GmbH & Co. / MAI Central Eastern Europe Ltd. / MAI Insurance Brokers / Meeùs Assurantiën B.V. / Norwegian Broker AS / Optimum Insurance Consultants Oy / Ribé Salat Broker Correduria de Seguros y Reaseguros, S.L. / Servyr Courtage / Söderberg & Partners / Strategica Group Srl

NORTH AMERICA

Bolton & Company / Catto & Catto LLP / Celedinas Insurance Group / Fred C. Church, Inc. / Cobbs Allen / Cottingham & Butler, Inc. / The Crichton Group / Couch Braunsdorf Insurance Group, Inc. / Cragin & Pike, Inc. / The Daniel and Henry Co. / Daniels Insurance Agency, Inc. / DiBuduo & DeFendis Insurance Brokers, LLC / Early, Cassidy & Schilling, Inc. / ECM Solutions / Engle-Hambright & Davies, Inc. / Excel Insurance and Risk Management, Inc. / Freisenbruch-Meyer Insurance Services Limited / Frenkel & Co., Inc. / Gillis, Ellis & Baker, Inc. / The Graham Company / Groupe Viau, Inc. / Harden / Haylor, Freyer & Coon, Inc. / The Horton Group, Inc. / The IMA Financial Group, Inc. / INSURICA / Kapnick Insurance Group / Kinney Pike Insurance, Inc. / Lanier Upshaw, Inc. / Lipscomb & Pitts Insurance LLC / LMC Insurance & Risk Management, Inc. / Louisiana Cos./Querbes & Nelson / Lyons Companies / The Magnes Group, Inc. / The Mahoney Group / MJ Insurance, Inc. / Moreton & Company / Oswald Companies / Parker, Smith & Feek, Inc. / PayneWest Insurance, Inc. / Pritchard & Jerden / R&R Insurance Services, Inc. / RCM&D / Roach Howard Smith & Barton / The Rowley Agency, Inc. / Seacrest Partners / Shaw Sabey & Associates Ltd. / Starkweather & Shepley Insurance Brokerage, Inc. / Thames Batré Insurance / The Underwriters Group / Wedgwood Insurance / Wells Insurance / Woodruff-Sawyer & Co. / Wortham Insurance & Risk Management





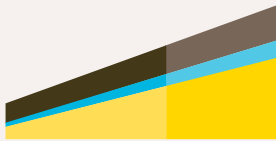
100+ Partner Firms



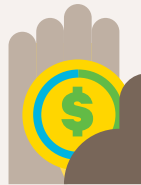
**600+
Partner Offices**



Six Continents



**\$28 Billion
USD in Annual
Premium Volume**



**Top 5 in Total
Brokerage
Revenue**



**Largest Independent
Brokerage Revenue**

Assurex Global

175 South 3rd Street, Suite 800
Columbus, Ohio 43215 USA
+1 800-ASSUREX
www.assurexglobal.com